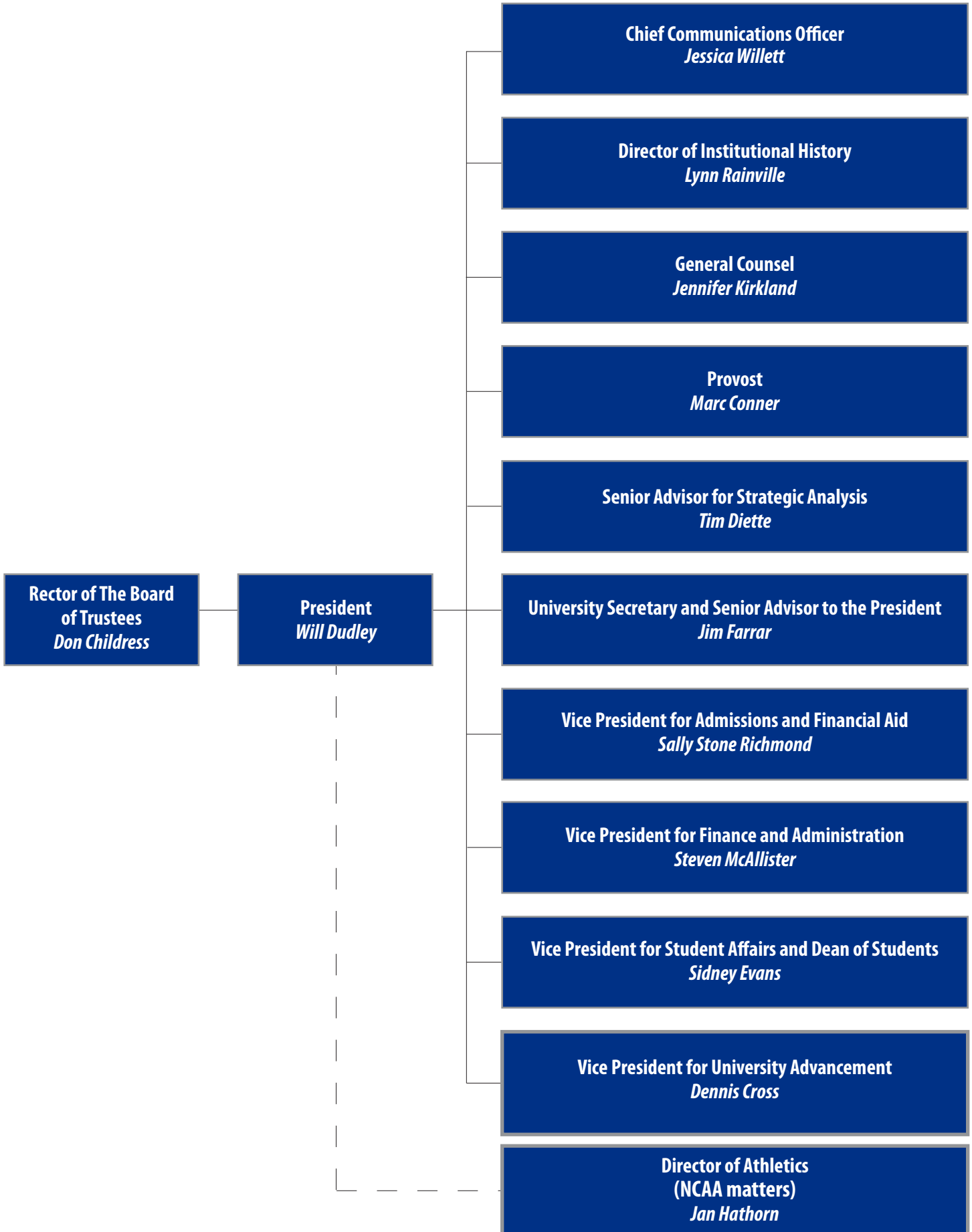
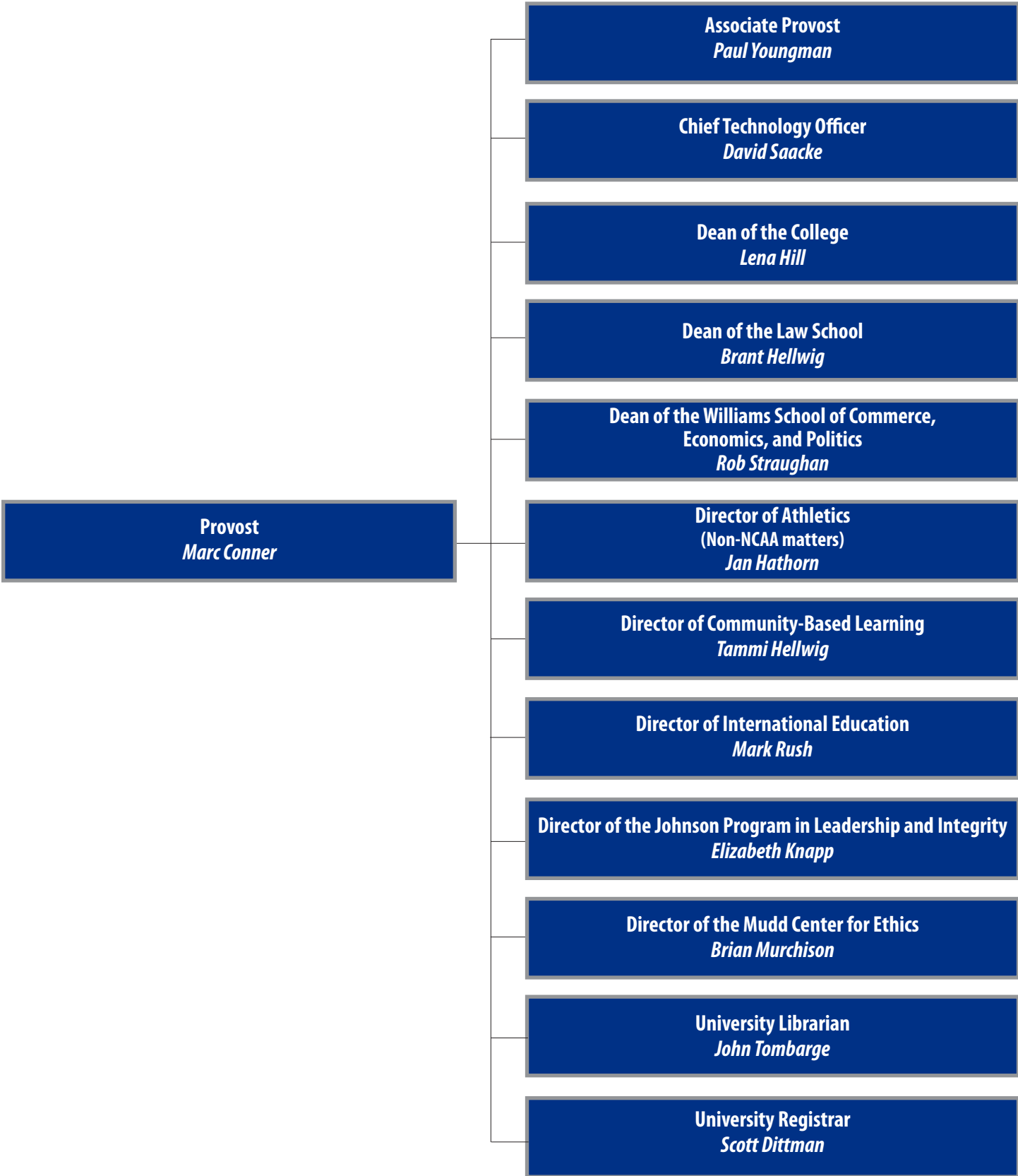


Washington and Lee University

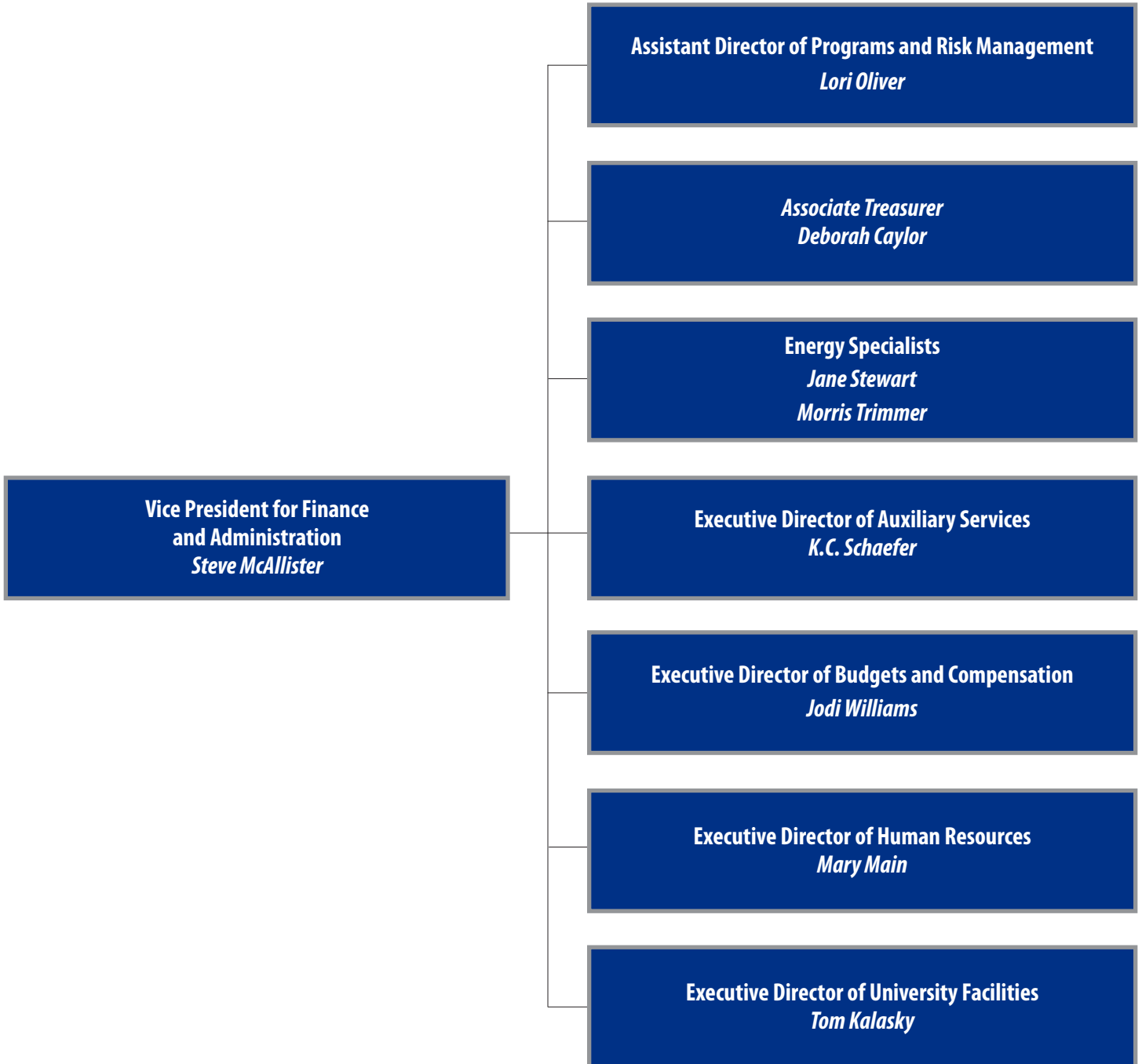
Organizational Chart of Administrative Responsibility, 2019–20



Office of the Provost



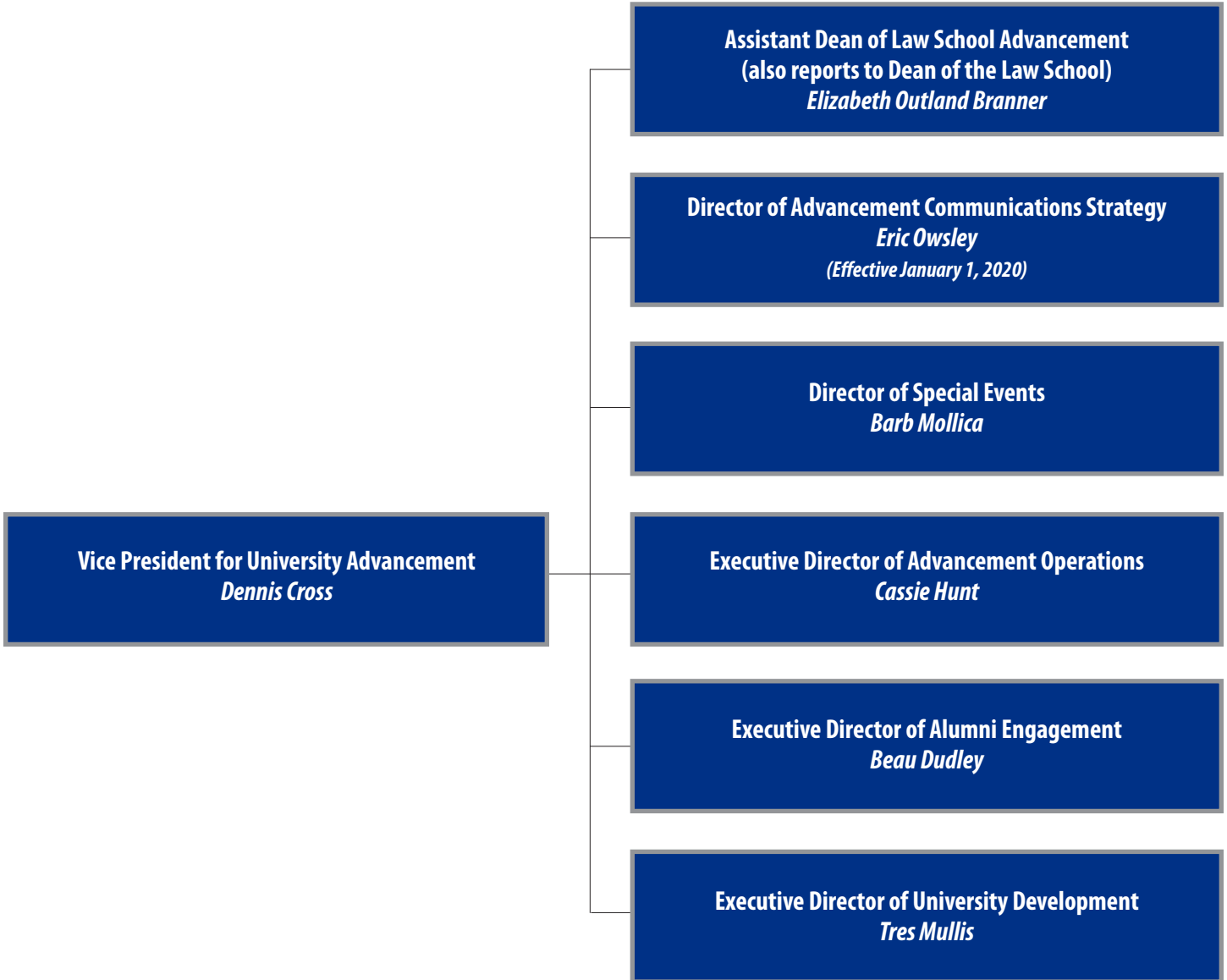
Office of Finance and Administration



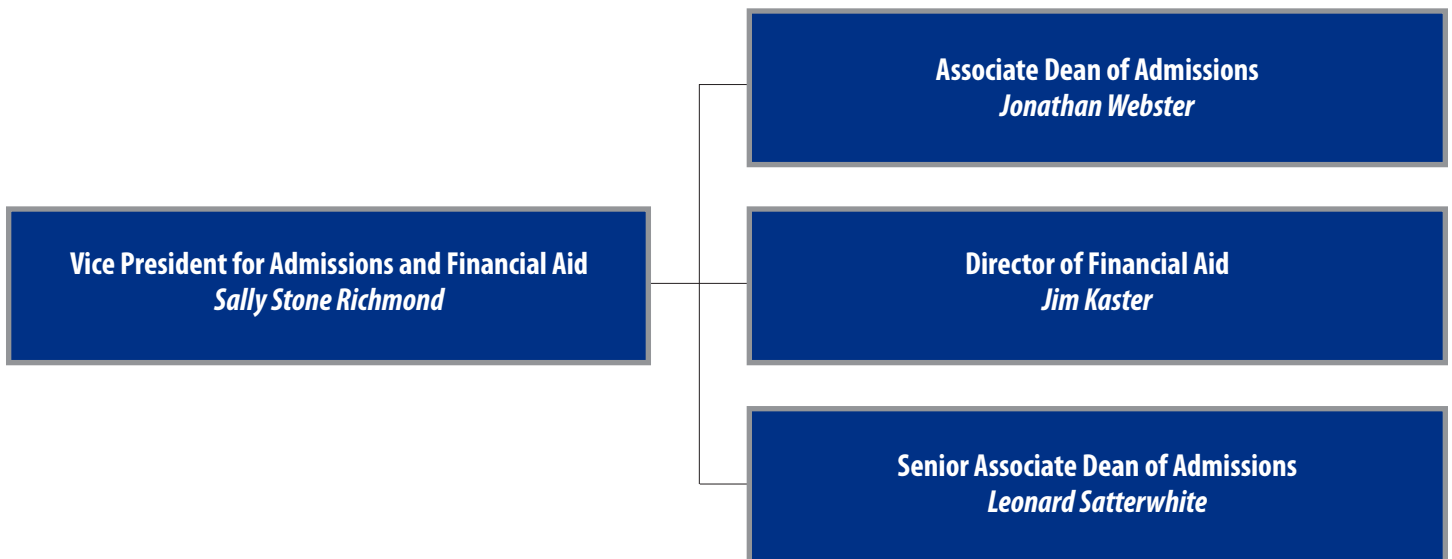
Office of Student Affairs



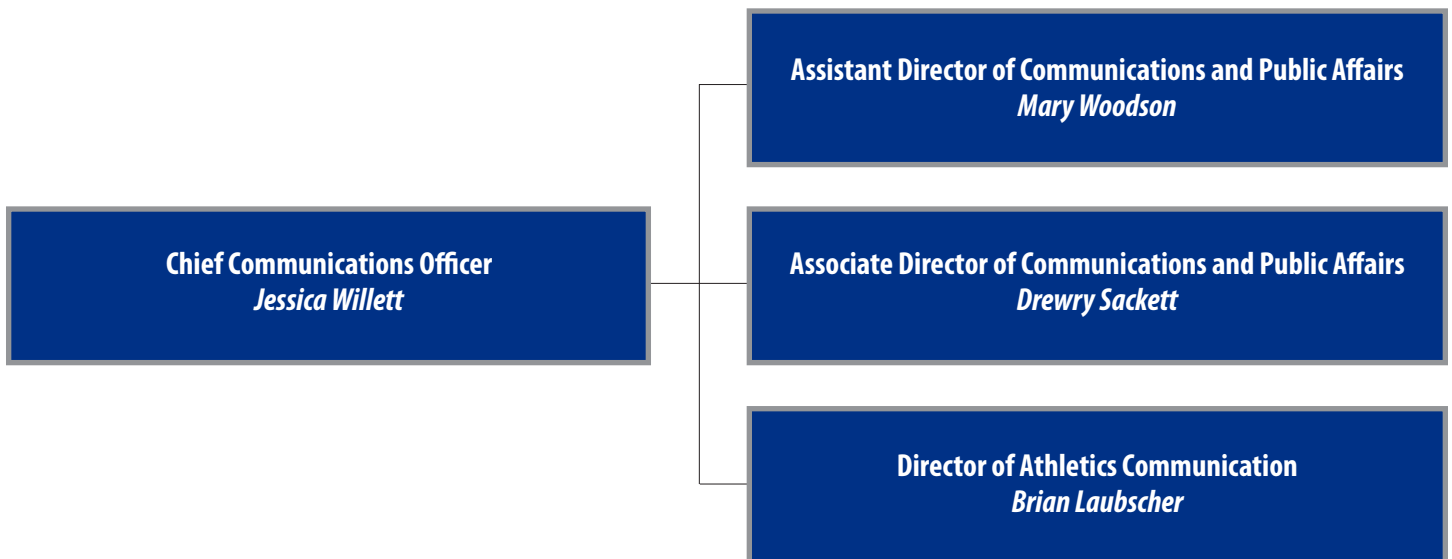
Office of University Advancement



Office of Admissions and Financial Aid



Office of Communications and Public Affairs



Office of Institutional History

Director of Institutional History
Lynn Rainville

Director of University Collections and Lee Chapel and Museum
Lucy Wilkins

Office of Strategic Analysis

Senior Advisor to the President for Strategic Analysis
Tim Diette

**Executive Director of Strategic Analysis
and Institutional Research**
Bryan Price